

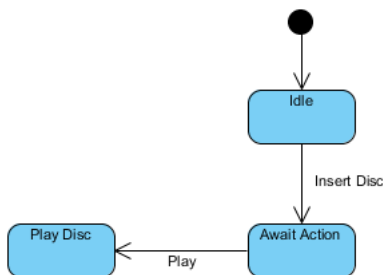


How to Fill-in a UML State's Body?

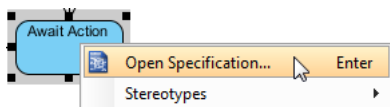
Written Date : August 16, 2010

You can define entry activity, exit activity and do activity (i.e. activity to perform) for each state in a [state machine diagram](#). Furthermore, you can specify the pre and post condition, and the body for each of them. In this tutorial, you can learn how to specify these values, and how to show/hide them in the state body through updating the presentation options of state.

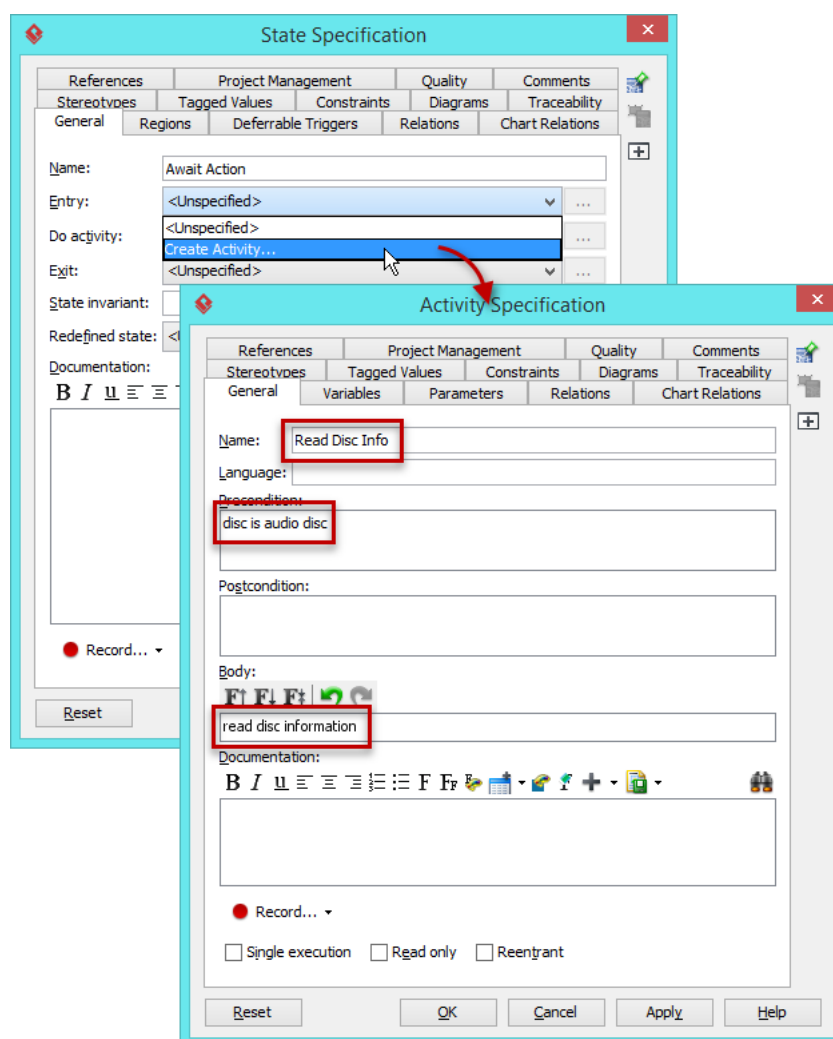
1. Download [Disc Player.vpp](#). You can also find this file at the bottom of this tutorial.
2. Open the downloaded .vpp file in Visual Paradigm. To open a project, select **Project > Open** from the application toolbar.
3. Take the following state machine diagram as an example:



4. Next, enter values for *Await Action* state. Right-click on *Await Action* state and select **Open Specification...** from the pop-up menu.



- In the **State Specification** window, you can enter entry activity, do activity and exit activity. Try to enter values for entry. Click on the drop down menu of **Entry**. In the **Activity Specification**, enter name as *Read Disc Info*, precondition as *disc is auto disc* and body as *read disc information*. Click **OK** button.



- Edit do activity and exit activity for *Await Action* state following the table as shown below:

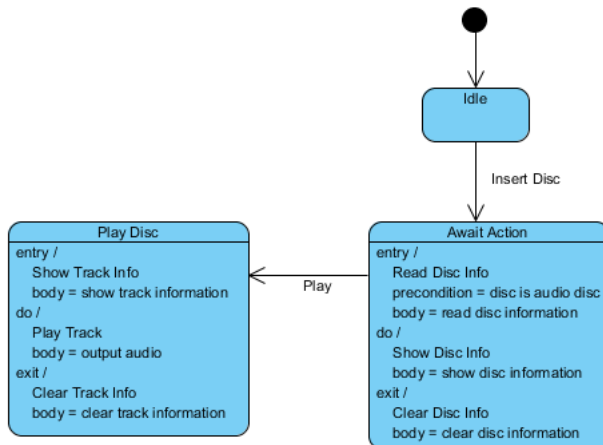
	Name	Body
Do (activity)	Show Disc Info	Show disc information
Exit (activity)	Clear Disc Info	Clear disc information

- Now, enter values for *Play Disc* state. Right-click on *Play Disc* state and select **Open Specification...** from the pop-up menu. Enter entry activity, do activity and exit activity following the table as shown below:

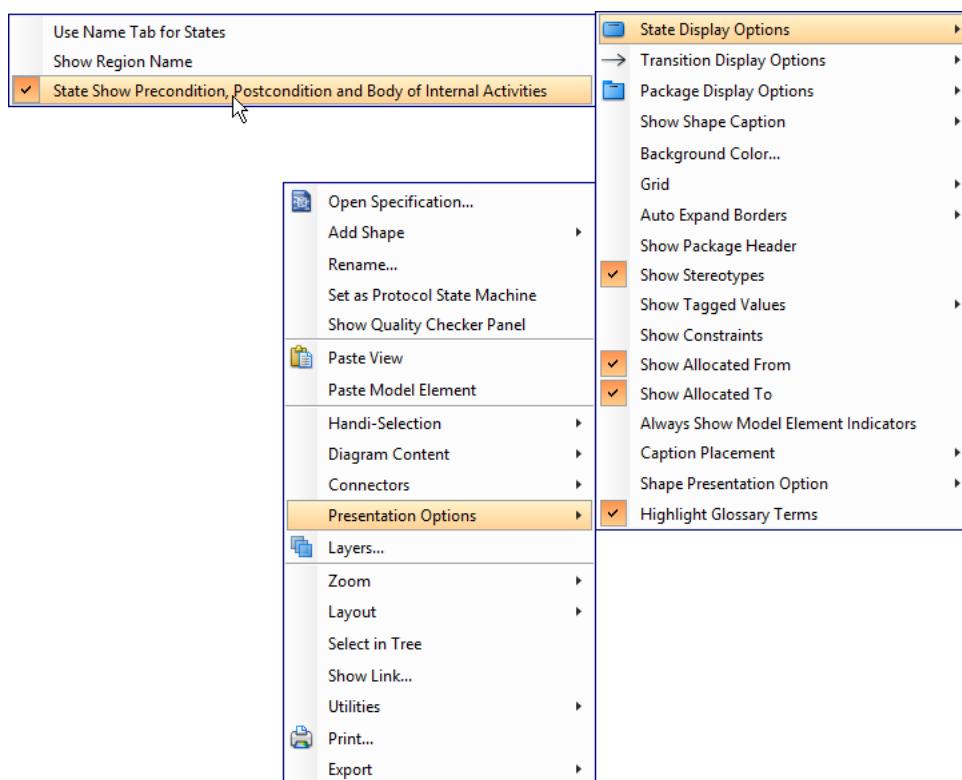
	Name	Body

Entry (activity)	Show Track Info	Show track information
Do (activity)	Play Track	Output audio
Exit (activity)	Clear Track Info	Clear track information

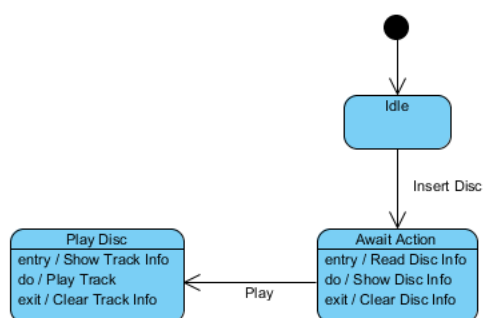
8. The result of editing values for both states:



- If you want to hide the values in the state body. Right-click on the diagram's background and de-select **Presentation Options > State Display Options > State Show Pre-condition, Postcondition and Body of Internal Activities** from the pop-up menu.



- The result of hidden value for all states:



Resources

- [Disc Player.vpp](#)



Visual Paradigm home page
(<https://www.visual-paradigm.com/>)

Visual Paradigm tutorials
(<https://www.visual-paradigm.com/tutorials/>)